

Since its inception, Interfaith Works has been a catalyst of many influential community programs and has assisted in the development of many others.

Here are just some of those programs:

- Bread & Roses House
- Capitol Hospice (later Providence)
- Community Care Clinic (later Sea Mar)
- Community Kitchen (at Salvation Army)
- Community Meditation for Global Peace
- Dispute Resolution Center
- Divorce Life Line support group
- Emergency Overflow Shelter / Emergency Shelter Network
- Habitat for Humanity
- Homes First!
- Housing Task Force
- Interfaith Clergy Network
- Interfaith Overnight Youth Camp
- Legislative Chaplains
- Mayors' Prayer Breakfast
- Ministry of Presence (AIDS support)
- Neighbors in Need / Thurston County Food Bank
- "Pastor's Perspective" (weekly column in *The Olympian*)
- Prison Outreach
- Pulpit Exchange
- Response to 9-11 Tragedy
- SideWalk
- Spiritual Care of the Dying program
- Singles Support Group
- Study Circles for Interfaith Dialogue
- Thurston County Family Court
- Violent Toy Turn-in/Toys for Peace
- World Sacred Music Festival



We can't do it without you!

Can you support Interfaith Works with a donation?

Send your check to the address below - or see the Contribute! page on our website for how to donate online.

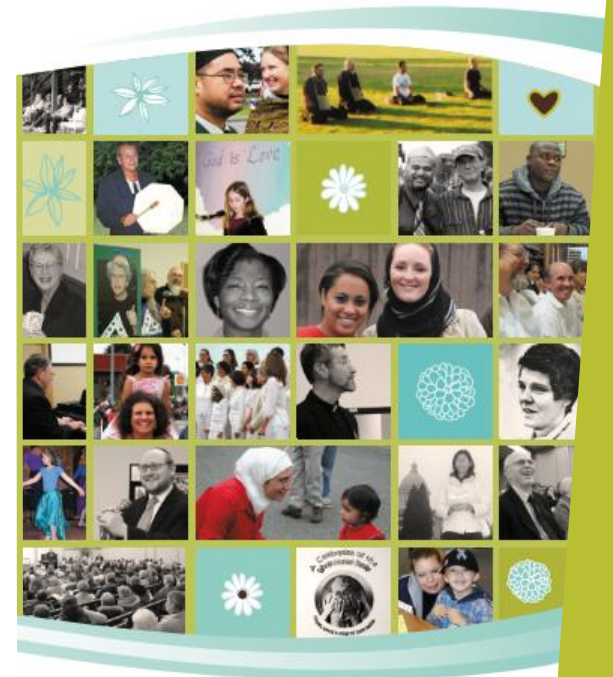
Thank you!

Interfaith Works is a 501(c)(3) non-profit organization. Contributions are tax-deductible as allowed by law.



PO Box 1221
Olympia, WA 98507
office@interfaith-works.org
(360) 357-7224

Social justice and peace through interfaith understanding and cooperation



interfaith-works.org

Interfaith Works (IW) is a non-profit association of faith communities and individuals of diverse faith and cultural traditions in Thurston County.

Established in 1974 as “Associated Ministries,” IW promotes interfaith and inter-cultural understanding and has a long-standing history of bringing the human and financial resources of our faith communities together for the benefit and empowerment of those in need.

For four decades we have been a leading local agency promoting civil rights, peace, respect and diversity in our community. Partnering with other social service providers, we have developed new and successful approaches to responding to local homelessness and gaps in our safety net.



Current Programs and Projects

- ◆ **IW Emergency Overnight Shelter and Winter Warming Center**
- ◆ **Interfaith Thanksgiving Celebration**
- ◆ **Moments of Blessing**
- ◆ **Earth Stewardship Committee**
- ◆ **All Souls Day Memorial**
- ◆ **CROP Hunger Walk**
- ◆ **Interfaith Summer Day Camp**
- ◆ **Clergy Breakfasts**



www.interfaith-works.org

Member Faith Communities

Bahá'í Assembly of Central Thurston County
Bahá'í Assembly of Olympia
Bahá'í Assembly of Thurston County East
Center for Spiritual Living – Olympia
Community for Interfaith Celebration
Emmaus Ecumenical Catholic Community
First Christian Church
First Church of Christ, Scientist
First United Methodist Church of Olympia
Gloria Dei Lutheran Church
Holy Wisdom Inclusive Catholic Community
Islamic Center of Olympia
Lacey Community Church
Lacey Presbyterian Church
The Lutheran Church of The Good Shepherd
Nalanda Institute
Olympia Friends Meeting
Olympia Unitarian Universalist Congregation
Open Gate Zendo (formerly Koin An Zen Dojo)
St. Andrew's United Methodist Church
St. Benedict Episcopal Church
St. John's Episcopal Church
St. Michael Catholic Parish
Temple Beth Hatfiloh
Tumwater United Methodist Church
The United Churches of Olympia
Unity Church of Olympia
Westminster Presbyterian Church

Member Affiliate Organizations

CROP Hunger Walk Committee
Olympia Fellowship of Reconciliation
Plum Mountain Buddhist Community
The Priory Spirituality Center