

**Since its inception, Interfaith Works has been a catalyst of many influential community programs and has assisted in the development of many others.**

Here are just some of those programs:

- Bread & Roses House
- Capitol Hospice (later Providence)
- Community Care Clinic (later Sea Mar)
- Community Kitchen (at Salvation Army)
- Community Meditation for Global Peace
- Dispute Resolution Center
- Divorce Life Line support group
- Emergency Overflow Shelter / Emergency Shelter Network
- Habitat for Humanity
- Homes First!
- Housing Task Force
- Interfaith Clergy Network
- Interfaith Overnight Youth Camp
- Legislative Chaplains
- Mayors' Prayer Breakfast
- Ministry of Presence (AIDS support)
- Neighbors in Need / Thurston County Food Bank
- "Pastor's Perspective" (weekly column in *The Olympian*)
- Prison Outreach
- Pulpit Exchange
- Response to 9-11 Tragedy
- SideWalk
- Spiritual Care of the Dying program
- Singles Support Group
- Study Circles for Interfaith Dialogue
- Thurston County Family Court
- Violent Toy Turn-in/Toys for Peace
- World Sacred Music Festival



**We can't do it without you!**

**Can you support Interfaith Works with a donation?**

Send your check to the address below - or see the Contribute! page on our website for how to donate online.

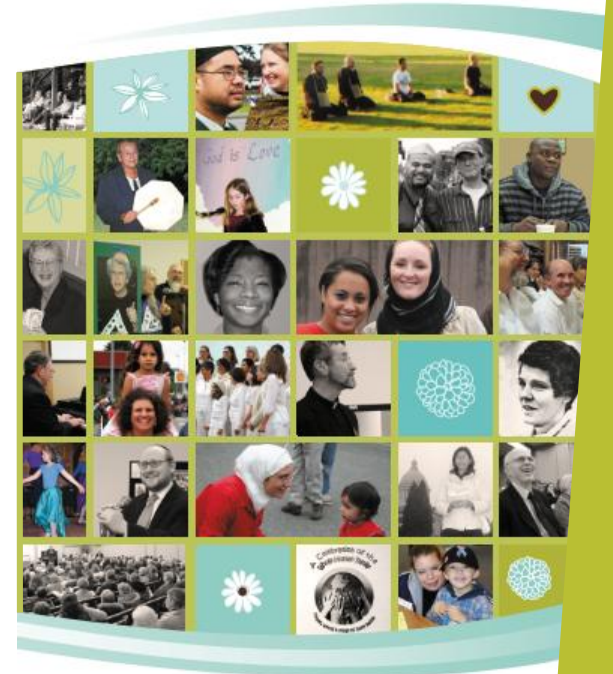
*Thank you!*

Interfaith Works is a 501(c)(3) non-profit organization. Contributions are tax-deductible as allowed by law.



PO Box 1221  
Olympia, WA 98507  
office@interfaith-works.org  
(360) 357-7224

Social justice and peace through interfaith understanding and cooperation



interfaith-works.org

**Interfaith Works (IW)** is a non-profit association of faith communities and individuals of diverse faith and cultural traditions in Thurston County.

Established in 1974 as “Associated Ministries,” IW promotes interfaith and inter-cultural understanding and has a long-standing history of bringing the human and financial resources of our faith communities together for the benefit and empowerment of those in need.

For four decades we have been a leading local agency promoting civil rights, peace, respect and diversity in our community. Partnering with other social service providers, we have developed new and successful approaches to responding to local homelessness and gaps in our safety net.



## Current Programs Areas

INTERFAITH UNDERSTANDING

SACRED SERVICE

HOMELESS SERVICES

SOCIAL JUSTICE

For details, visit



[www.interfaith-works.org](http://www.interfaith-works.org)

## Member Faith Communities

Bahá'í Assembly of Central Thurston County  
Bahá'í Assembly of Olympia  
Bahá'í Assembly of Thurston County East  
Bahá'í Assembly of Tumwater  
Center for Spiritual Living – Olympia  
Community for Interfaith Celebration  
Emmaus Ecumenical Catholic Community  
First Christian Church  
First Church of Christ, Scientist  
First United Methodist Church of Olympia  
Gloria Dei Lutheran Church  
Holy Wisdom Inclusive Catholic Community  
Islamic Center of Olympia  
Lacey Community Church  
Lacey Presbyterian Church  
The Lutheran Church of The Good Shepherd  
Nalanda Institute  
Olympia Friends Meeting  
Olympia Unitarian Universalist Congregation  
Open Gate Zendo (formerly Koin An Zen Dojo)  
St. Andrew's United Methodist Church  
St. Benedict Episcopal Church  
St. John's Episcopal Church  
St. Michael Catholic Parish  
Temple Beth Hatfiloh  
Tumwater United Methodist Church  
The United Churches of Olympia  
Unity Church of Olympia  
Westminster Presbyterian Church

## Member Affiliate Organizations

CROP Hunger Walk Committee  
Olympia Fellowship of Reconciliation  
Plum Mountain Buddhist Community  
The Priory Spirituality Center  
South Sound Buddhist Peace Fellowship